



2024 Catalogue



Table of Contents

About Greenland Seeds - A Summary	03
Agricultural Leys	04
Organic Range	14
Equine & Paddock	20
Lawns & Landscaping	22
Sports & Recreation	26
Amenity Fertilisers	29
CSS & SFI Schemes	30
Wildflowers	38
Catch Crops	44
Cover Crops	48
Game Cover	50
Wild Bird Food	56
Grasses Information / Glossary	58

About Greenland Seeds

A family business grown from the ground up

Greenland Seeds is an independent seed merchant, established in 1997 by Chris Hoff.

After two decades working in the agricultural seed trade, he headed back to his roots in Yorkshire to start the business.

Greenland has grown significantly; from three staff members working out of a small barn, to a 15-strong team processing and blending over 150 species of grasses, wildflowers, herbs and legumes through 6 mixing lines.

Each year, we produce and process around 2,500+ tons of seeds at our premises in East Yorkshire, and these figures grow year on year.

This continued growth has resulted in expanding by moving to a brand new purpose built 22,000 sq. foot facility in Newport, East Yorkshire. Further investment has been earmarked with two new machines scheduled to be installed in the coming year. This will further improve the service & capabilities of the company in order to meet the diverse needs of our large customer base.

We boast a strong portfolio of varieties from a wide range of suppliers. We have the flexibility as an independent seed specialist to have strong relationships with many leading plant breeders and suppliers across the UK & Europe.

We are a tight knit team committed to offering the best service, and take great pride in offering the best value for money. You will always receive the 'family business' feel when contacting, and will receive a swift response to any quotes, queries and correspondence.

We look forward to hearing from you, and wish you a successful 2024 season.

Mike Hoff
Managing Director

Delivery Information

FREE 2-3 Working Day Palletised Delivery

- Monday to Friday delivery
- Minimum 100kg order total
- Order by 1pm Monday to Thursday for same-day dispatch

Small 2-3 Working Day Delivery

- £25 + VAT
- Monday to Friday delivery
- Under 100kg order total
- Order by 1pm Monday to Thursday for same-day dispatch

Saturday Palletised Delivery

- £100 + VAT per pallet
- Saturday delivery
- The capacity of 1 pallet is 1000kg - Order by 1pm Friday

Next Day Palletised Delivery

- £30 + VAT per pallet
- Monday to Friday delivery
- The capacity of 1 pallet is 1000kg
- Order by 1pm Monday to Thursday

All orders weighing 100kg or over qualify for FREE 2-3 Working Day Palletised Delivery.

Orders under 100kg will be sent on the Small 2-3 Working Day Delivery service as standard and will be delivered in unwrapped packs.

Next Day Delivery and Saturday Delivery are available upon request.

We will confirm at the time of ordering which delivery options your order qualifies for and specify the number of pallets in your delivery.

Agricultural

Supreme Ley Range

Ultimate Forage Quality

Top quality grass seed mixtures giving outstanding field performance

The Supreme range of grass ley mixtures are specifically designed to incorporate some of the best available varietal material, tried and tested across the UK.



Supreme Fast Grass Mixtures (1) + (2)

Two rapid, high producing Short Term mixtures, containing low temperature tolerant grasses. They are the perfect low cost options to sow late into autumn after Maize. Alternatively, use as a “quick fix” in spring or summer to boost on farm forage production.

Ideal for winter cropping, under sowing to Maize for soil erosion control and as “fuel” for AD Plants.

- Fast Grass mixtures expand the annual window of utilisation for forage production, because of their low temperature capability. This gives extra Dry Matter (DM) during the spring and autumn seasons.
- Fast Grass provides the flexibility of leaving down for further silage cuts into the second year after sowing. (Fast Grass Mixture NO: 2 is your choice for this approach).
- A real economic option to keep seed input costs low.
- They provide extremely robust autumn and spring growth due to the ability to produce forage DM at lower soil temperatures compared to other grasses.
- A perfect choice to under-sow Maize in mid summer, in order to prevent soil erosion.
- An ideal ‘intercrop’ option for producing a quality silage cut before returning to maize late spring.
- Fast Grass mixtures provide very high sugar and soluble carbohydrate content in cut (or even grazed) forage.
- Fast Grass mixtures widen the sowing options in the summer and autumn season and give the opportunity to get three crops in two years!!
- A perfect choice to suppress indigenous grass weed problems.

Fast Grass (1) 8 - 18 Months duration

%	Variety	Species
50	Pollanum / Koga	Westerwolds
20	Shakira	Dip Italian Rg
30	Teanna / Fabio	Tet Italian Rg
Packed in multiples of 25 Kgs - 15.00 Kgs / Acre		

Fast Grass (2) 12 - 24 Months duration

%	Variety	Species
65	Teanna / Fabio	Tet Italian Rg
35	Shakira	Dip Italian Rg
Packed in multiples of 25 Kgs - 15.00 Kgs / Acre		

Supreme Protein Booster

The perfect economic mixture choice to enhance home grown forage protein, due to its high red clover content. It's the simple, economic route, by way of maximising the utilisation of red clover in a high performance Ley. Protein Booster, as a result of its specific design, will produce DM Yields over a 3 to 4 year period. It produces a very persistent, high performance ley, with a dense canopy. Expect 3 to 4 cuts per year.

Weight	Variety	Species
3.00	Rozeta	(Longer duration red clover)
5.00	Agaska / Kirial	(Tet Hybrid Rg)
1.50	Nifty / Agaska	(Int Dip Prg)
4.00	Nolwen / Calibra	(Int Tet Prg)
13.50 Kgs / Acre Pack		



Supreme Shorter Term

A superb 2 to 3 year intensive silage and grazing ley. Gives good early and late season bite, plus very high silage yields with high sugar content. Can be cut up to 4 times per year or used for zero grazing.

Weight	Variety	Species
4.00	Fabio / Teanna	(Tel Ital Rg)
4.00	Shakira	(Dip Ital Rg)
3.00	Kirial / Aston Crusader	(Hybrid Rg)
3.00	Aston Energy / Nolwen	(Int Tet Prg)
14.00 Kgs / Acre Pack		

Supreme Medium Term

Designed for 3 to 5 years duration. Ideal for dual purpose use on livestock farms. Suits intensive regimes for dairy or silage systems. Medium term contains no Clover, enabling easy cost effective broad leaf weed control after establishment.

Weight	Variety	Species
1.50	Kirial / Ragt Cordial	(Hybrid Rg)
3.50	Aston Crusader	(Hybrid Rg)
4.50	Nolwen / Aston Energy	(Int Tet Prg)
4.50	Boyne / Nifty	(Int Dip Prg)
14.00 Kgs / Acre Pack		

Supreme Supercut

A longer duration specialist silage mixture capable of 5 to 6 years top quality forage production. Contains leading varieties with high cutting scores, plus timothy in order to fill the mid-summer gap. Soluble carbohydrate / sugar levels are outstanding. Top quality combined with good ground cover and persistence.

Weight	Variety	Species
4.50	Nolwen	(Int Tet Prg)
2.00	Nifty / Agaska	(Int Dip Prg)
4.00	Bijou	(Late Tet Prg)
3.00	Oakpark / Kendal	(Late Dip Prg)
0.50	Timothy	
14.00 Kgs / Acre Pack		

Supreme Long Term Dual Purpose

A highly flexible and productive long term Ley, inclusive of a quality White Clover Blend, containing medium and large leaved varieties. Absolutely perfect for a range of livestock situations. Gives exceptional high sugar silage, plus highly digestible aftermaths. (Duration a minimum of 5 to 7 years).

Weight	Variety	Species
2.50	Agaska / Boyne	(Int Dip Prg)
4.00	Aston Energy / Nolwen	(Int Tet Prg)
3.50	Bijou / Nashota	(Late Tet Prg)
0.25	Timothy	
0.75	Dual White Clover Blend	
14.00 Kgs / Acre Pack		

Supreme Permanent

An exceptionally hardy and persistent Ley mix, suited to a minimum of 8 to 10 years+ duration. Packed with top Diploid Perennial Ryegrasses to provide a dense durable bottom to the sward. Diploids make this mixture ideally conducive to grazing over a very long period. Flexible to make Hay, Haylage or Silage. First choice for combined Sheep and Cattle enterprises.

Weight	Variety	Species
2.50	Temprano	(Early Dip Prg)
2.00	Nifty / Agaska	(Int Dip Prg)
2.50	Oakpark	(Int Dip Prg)
2.00	Cancan / Kendal	(Late Dip Prg)
4.00	Nashota / Bijou	(Late Tet Prg)
0.50	Timothy	
14.00 Kgs / Acre Pack		

Supreme Total Graze

An outstanding top quality long term grazing mixture, suitable for both dairy cows and other ruminant livestock. It contains only Late Perennial Ryegrasses. The robust nature of this Ley design means not only will it last for a very long time, but is suited to a range of locations and soil types. This highly digestible leafy sward of high sugar grasses will enhance meat and milk production due to the palatability and nutritional gain from the leading varieties that make up this mixture.

Weight	Variety	Species
4.75	Bijou / Hurricane	(Late Tet Prg)
2.25	Nashota / Twymax	(Late Tet Prg)
3.50	Oakpark / Cavendish	(Late Dip Prg)
3.50	Cancan / Toddington	(Late Dip Prg)
14.00 Kgs / Acre Pack		

Supreme Total Graze can be ordered with or without a specialist grazing blend of White Clovers. Please ask for details and advice.

Supreme Hay / Haylage Leys

Both designed specifically for high quality Hay / Haylage production.

Short Term Hay/Haylage (2-3 Years)

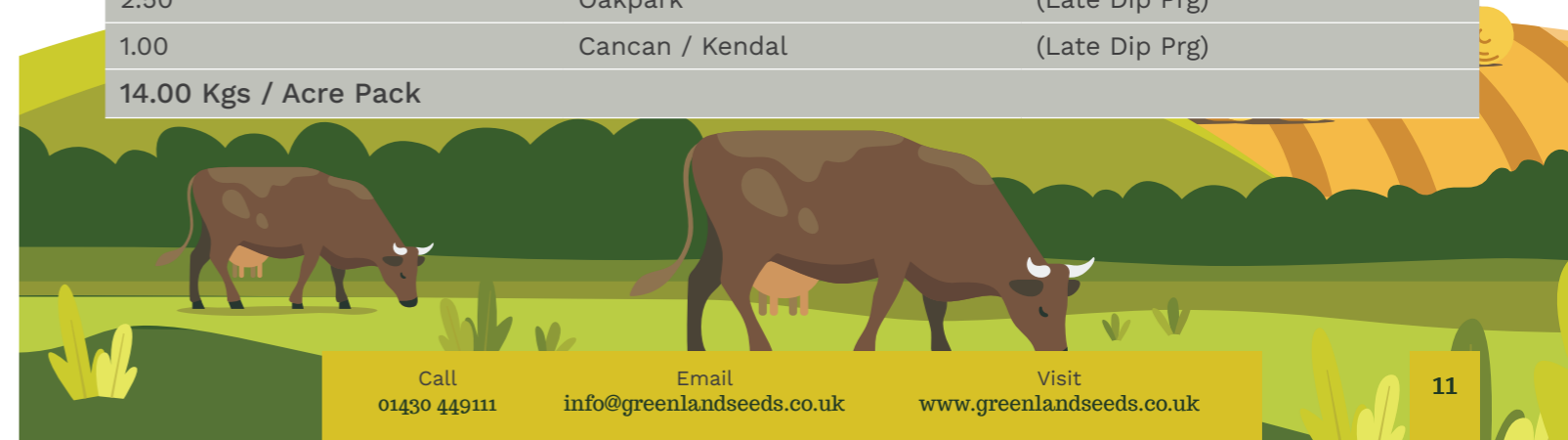
This mix is devised specifically for the production of hay or haylage. Lasting two years, and with good disease resistance.

Weight	Variety	Species
6.00	Shakira	(Dip Ital Rg)
4.00	Star	(Dip Ital Rg)
4.00	Temprano	(Early Dip Prg)
14.00 Kgs / Acre Pack		

Longer Term Hay/Haylage Leys (4-6 Years)

A longer term option for hay and haylage with longer lasting perennial ryegrass. Diploid varieties have been included for faster drying. Timothy will provide good bulk & high quality yields.

Weight	Variety	Species
1.25	TBA	(Timothy)
1.25	Laura / Senu	(Meadow Fescue)
4.00	Temprano	(Early Dip Prg)
4.00	Nifty / Boyne	(Int Dip Prg)
2.50	Oakpark	(Late Dip Prg)
1.00	Cancan / Kendal	(Late Dip Prg)
14.00 Kgs / Acre Pack		



Herbal Leys

Our high performance Herbal Leys are made up of grasses, herbs and legumes. Together they deliver soil fertility, structure & boost livestock health.

Supreme HP Herbal Ley

A superb all-round herbal Ley that exhibits the huge advantages of herbal inclusion whilst providing additional contributions from the other mixture components. Provides an exciting alternative grazing option to just ryegrass and clover mixtures.

Designed for continuous grazing and forage utilisation throughout the growing season. Improves soil structure, adds essential minerals, and enhances both palatability and the general health of grazing livestock. Perfect choice to lower or eliminate N based fertiliser usage.

Weight	Species
2.50	Late Tet Perennial Ryegrass
2.50	Late Dip Perennial Ryegrass
0.75	Festulolium
2.25	Sainfoin
0.75	Timothy
0.75	Meadow Fescue
1.00	Red Clover
0.50	Birdsfoot Trefoil
0.25	Medium Leaved White Clover

Weight	Species
0.25	Small Leaved White Clover
0.50	Ribwort Plantain
0.10	Yarrow / Sweet Fennel
0.50	Persian Clover
0.70	Burnet
0.20	Sheeps Parsley
0.50	Perennial Chicory
Optional without Perennial Chicory, by increasing the alternative herb contents	
14.00 Kgs / Acre Pack	

Supreme HP Economy Herbal Ley

The 'economy' Herbal ley is a flexible alternative at a lower price for your customers to consider. It's an extremely diverse mixture in species terms. We have found it has performed exceptionally well across a range of soil types and locations in the past 5 years or so.

Weight	Species
3.00	Late Tet Perennial Ryegrass
2.50	Late Dip Perennial Ryegrass
1.00	Festulolium
2.15	Common Sainfoin
1.00	Timothy
0.75	Meadow Fescue
1.00	Rozetta (Red Clover)
0.25	White Clover Blend
0.50	Crimson Clover
0.50	Forage Burnet
0.50	Agric. Per. Chicory
0.40	Ribwort Plantain
0.10	Sheeps Parsley
0.35	Persian Clover
14.00 Kgs / Acre Pack	

Organic Range

A first-class quality portfolio of classic organic ley mixtures.

Always designed for top field performance at very sensible prices.

Mixture Specifications

All mixture/varietal ingredients are fully detailed on each and every bag; highlighting the 70% Organic constituents. (We reserve the right to substitute varieties if a variety does become sold out.) Any such alteration will always be specified on all DEFRA seed labels and mixing sheets at time of production.



Key Criteria and Objectives

- Realistic / economic seed mixture costs.
- Providing a wide range of re-seeding options in terms of ley duration.
- Matching management needs via high quality milk and meat production.
- Proven organic ley mixtures that have performed across a host of UK locations over the last 20 plus years.
- The inclusion of top quality, organically produced seed at a minimum of **70%** by weight in each ley mixture, to comply with existing legislation.
- To fully optimise ley establishment under organic farming conditions by advocating sensible and liberal seed rates for mixtures in all conditions.
- Perennial Chicory, Sheep Parsley, Burnet and Ribwort Plantain available to enhance mineral intake.

Classic Clover Rich

- A robust 18 to 24 month Red Clover / Italian mixture.
- Can be utilised in both conversion and full organic systems.
- Produces an abundance of protein rich forage.
- Ideal for green manure, organic matter / fertility building

%	Variety	Species
20	Rozeta	Red Clover
5	Diplomat	Red Clover
5	Fabio	Tet Italian RG
35	Teanna	Organic Tet Ital RG
35	Star	Organic Dip Ital RG
Recommended to sow at a minimum 12.00 Kgs per acre		



Classic Organic Shorter Term

- Ideally suited to 2 to 3 years dual-purpose management.
- Produces excellent silage - plus very palatable aftermaths.
- Hybrid ryegrass and inclusion enhances longevity. The clovers boost soluble carbohydrate and forage protein contents.

%	Variety	Species
3	Diplomat	Red Clover
8	Rozeta	Red Clover
40	Aston Crusader	Organic Hybrid RG
14	Nolwen	Tet Prg
30	Teanna	Organic Tet Ital RG
Recommended to sow at a minimum 12.50 Kgs per acre		

Classic Organic Medium Term

- Produces high quality digestible herbage over at least a 3 to 5 year period.
- Combines genetically very high yielding varieties to ensure optimum performance in the field.
- Optimises both grass quality and quantity, particularly if managed under an alternating cutting and grazing regime.

%	Variety	Species
5	Buddy	White Clover
6	Dublin	Large leafed White Clover
14	Seagoe / Nolwen	Int Tet Prg
20	Toddington	Organic late Dip Prg
25	Nashota	Organic late Tet
25	Nifty	Organic Int Dip
Recommended to sow at a minimum 13.50 Kgs per acre		

Classic Organic Perma-Graze

- Produces an extremely dense, clovery sward, exhibiting excellent persistence and winter hardiness.
- Leafy, yet prostrate in growth habit. This ley provides highly digestible grazing value for all livestock types.
- The clovers provide both durability plus propensity to produce liberal amounts of forage proteins and trace elements.
- Contains only late perennial ryegrass. Types best selected to a 'grazing only' regime over the very long term.

%	Variety	Species
5	Rivendel	White Clover
3	Liflex	White Clover
5	Dublin	Large leafed White Clover
35	Toddington	Organic late Dip Prg
35	Nashota	Organic late Tet Prg
5	Oakpark / Cancan	Late Dip Prg
10	Bijou	Late Tet Prg
2	Timothy	
Recommended to sow at a minimum 13.50 Kgs per acre		



Classic Organic Permanent

- First and foremost a permanent (dual purpose) ley. Perfect for very long term use.
- Excellent for early turnout, giving lush palatable growth in spring.
- Designed specifically to meet a range of uses on the livestock holding. Ideal for silage/hay/haylage plus set stocking or paddock grazing regimes.
- An extremely hardy mixture. The best choice for quality forage yield at higher altitudes in marginal farming situations or for those more difficult soil types that pose a real challenge.

%	Variety	Species
4	Liflex	White Clover
4	Dublin	Larger leafed White Clover
14	Nolwen	Int Tet Prg
25	Nifty	Organic Int Dip Prg
20	Toddington	Organic late Dip Prg
3	Timothy	
25	Nashota	Organic Late Tet Prg

Recommended to sow at a minimum 14.00 Kgs per acre

Classic Organic Supercut (Long Term)

- A highly durable mixture for long term conservation needs.
- First choice for outlying fields, often inaccessible to livestock.
- Gives excellent yields of protein from cut forage.
- Designed to perform under a continuous cutting regime over the long term.
- Includes leading White Clovers that enhance conserved grass quality.

%	Variety	Species
5	Rivendel	White Clover
3	Dublin	Larger leafed White Clover
5	Liflex	White Clover
20	Diwan / Aston Energy	Int Tet Prg
20	Toddington	Organic late Dip Prg
20	Timothy	
17	Nashota	Organic Late Tet Prg

Recommended to sow at a minimum 14.00 Kgs per acre

The Classic Organic Range meets most Organic growers' needs and choices for re-seeding.

Sometimes there is a requirement for specialist mixtures. Remember, we are only too happy to oblige. If the varieties are not detailed here or maybe other grass species and herbs are required then just ask us to competitively produce your special mix requirements for you.

Organic Straights we also provide:

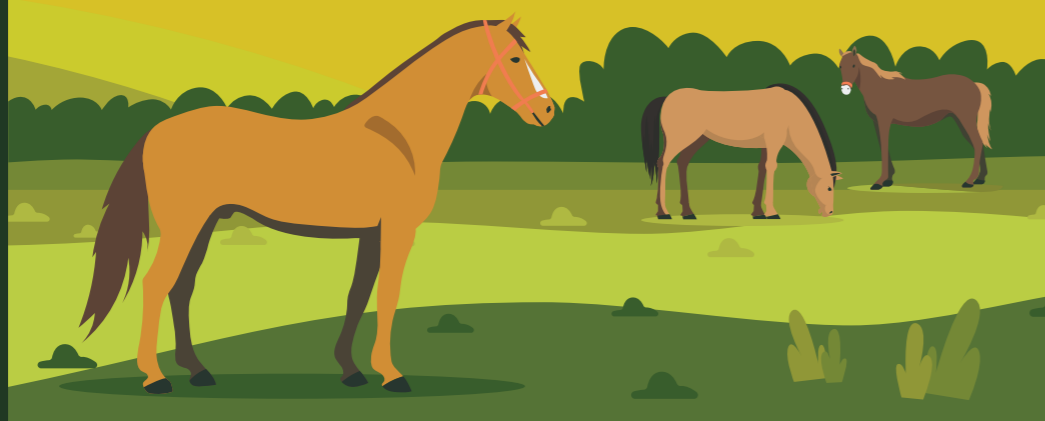
- Westerwolds
- Italian Ryegrass
- Hybrid Ryegrass
- Festololium
- Perennial Ryegrass
- Timothy
- Cocksfoot
- Meadow Fescue
- Red Clover
- White Clover
- Crimson Clover
- Vetch
- Mustard
- Cereals
- Buckwheat

Equine & Paddock

Our Supreme range of equine and paddock mixtures produce nutrient-rich grazing for horses and ponies.

Each mix is fast-growing, quick to establish and creates a hard-wearing grazing pasture. All mixtures are free of clovers and tetraploid grasses that can potentially cause health issues in horses and ponies.

The range includes mixtures without ryegrass and mixtures with beneficial herb species.



Supreme Horse & Pony Paddock

A specialist and proven equine mixture primarily for grazing and with an option to cut for hay or haylage. Very long term and highly durable. This specific mix does not contain any Clover to avoid potential Laminitis problems in the equine species.

We do not include any Tetraploid Ryegrass varieties in Supreme Horse & Pony because they inhibit the easy cutting of hay / haylage and can be detrimental to equine species digestive systems.

Weight	Variety	Species
1.00	Boyne / Nifty	Int Dip Prg
4.75	Temprano	Early Dip Prg
4.50	Cavendish	Late Dip Prg
2.25	Strong Creeping Red Fescue	
1.00	Timothy	
13.50 Kgs / Acre Pack		

Supreme Equine Overseeding

Weight	Variety	Species
6.50	Nui	Early Dip Prg
6.50	Esquire	Dwarf Ryegrass
13.50 Kgs / Acre Pack		

Supreme Equine Herbal

%	Variety
40	Burnet
15	Chicory
25	Ribwort Plantain
15	Sheeps Parsley
5	Yarrow
1.00 Kgs / Pack	

Supreme Natural Meadow & Laminitics

A specialist high performance equine mixture without any ryegrass content at all. We offer this superb (equine safe) ley mix with the option of suitable herbs being added. Produces natural diverse forage species that are both durable and highly persistent. Adding appropriate herbs to the mixture boosts the availability of vital minerals and vitamins to grazing livestock. Offers flexibility to make high quality hay or haylage.

Weight	Species	Weight	Species
4.50	Timothy	4.00	Strong Creeping Red Fescue
1.50	Meadow Fescue	1.50	Sheeps Fescue
1.50	Smooth Stalked Meadow Grass		

13.00 Kgs / Acre Pack - Option to add 0.50kgs or 1.00kgs Herbal mix when ordering. This contains Perennial Chicory, Burnet, Ribwort Plantain & Sheeps Parsley.

Lawns & Landscaping

Top quality seed mixtures for lawns, sport & recreation

The supreme range of amenity seed mixtures are specifically designed to incorporate some of the best available cultivars, tried and tested in U.K. conditions.



Supreme Gold Prestige

- Exceptional mix providing the very highest quality sward.
- Hardwearing turf or lawn mixture.
- Only top rated STRI varieties included.

%	Variety	Species
50	Double	Dwarf Ryegrass (STRI listed)
23	Wagner	Chewings Fescue (STRI listed)
20	Maxima	Creeping Red Fescue (STRI listed)
7	Evora	SSMG
Sowing rate: 30-40 grams per m ² Cutting height: down to 20mm		

Supreme Fine & Luxurious (no ryegrass)

- A top quality fine mix without ryegrass.
- Ideal for light wear and activity, producing a pristine slow growing lawn surface.
- Produces a beautiful green surface with excellent fine turf characteristics.
- Perfect choice for ornamental lawns and low wear areas.

%	Species
65	Creeping Red Fescue
25	Chewing Fescue
5	Highland (Brown Top Bent)
5	Slender Red Fescue
Sowing rate: 30-50 grams per m ² Cutting height: down to 10mm	

Supreme Slow Grow (no ryegrass)

- A slow growing mixture requiring minimum upkeep.
- Gives a stunning fresh green colour across the seasons, combined with good wear tolerance.
- Superb choice for surrounds within urban or rural developments, housing or industrial estates.
- An economical purchase needing very little maintenance once established.

%	Species
60	Creeping Red Fescue
25	Chewing Fescue
7	Smooth Stalked Meadow Grass
3	Highland (Brown Top Bent)
5	Slender Red Fescue
Sowing rate: 25-45 grams per m ² Cutting height: down to 10-18mm	

Supreme Shady Areas

- This mixture is specifically formulated for damp, difficult or shaded areas.
- It is luxuriant in its growth and adapts well to low light environments.
- We do however recommend that customers take great care with the frequency of mowing; grass growing in shady conditions will always be subject to more stress.

%	Species
5	Brown Top Bent
10	Smooth Stalked Meadow Grass
15	Slender Red Fescue
30	Dwarf Ryegrass
40	Creeping Red Fescue
Sowing rate: 35-50 grams per m ² Cutting height: down to 15mm	

Supreme Economy Lawn

- A highly cost effective solution for a range of lawned areas.
- Contains amenity species specifically bred for the domestic market.
- Highly durable, persistent and extremely hardwearing.

%	Species
60	Dwarf Amenity Ryegrass
40	Creeping Red Fescue
Sowing rate: 30-40 grams per m ² Cutting height: down to 20mm	



Sports & Recreation

Our Sports & Recreation grass range includes mixes specifically for football, rugby, cricket, golf and bowling greens.

All mixes are quick to establish, producing excellent colour and a good sward appearance. The grass species in each mix are suitable for close mowing and have a high wear tolerance.



Supreme Sports Pitch

- An exceptional and flexible mixture for a range of field sport.
- Designed for frequent and aggressive use, and exhibiting excellent wear tolerance throughout.
- Shows outstanding recovery through its re-growth characteristics, retaining its bright green colour.
- Ideal for football, rugby, hockey, cricket outfield, polo pitches or gallops.

%	Species
35	Dwarf Amenity Ryegrass (STRI listed)
35	Dwarf Amenity Ryegrass (STRI listed)
25	Creeping Red Fescue
5	Smooth Stalked Meadow Grass
Sowing rate: 30-40 grams per m ² Cutting height: down to 25mm	

Supreme Sports Renovation

- Suitable for all recreational pitches.
- Fast establishment & high shoot density.
- Tightly knitted turf prevents damage when played on.

%	Species
35	Dwarf Amenity Ryegrass (STRI listed)
35	Dwarf Amenity Ryegrass (STRI listed)
30	Dwarf Amenity Ryegrass (STRI listed)
Sowing rate: 30-40 grams per m ² Cutting height: down to 20mm	

Supreme Golf & Bowling Green

- A classic Chewings Fescue and Bent mix for specific use on green areas (80/20 ratios).
- Produces a luscious, dense sward exhibiting deep green effect throughout the year.
- Ideal for those relaxing leisure sports such as Bowls or Golf, (allowing the ball to run smoothly and truly across the surface).

%	Species
80	Chewing Fescue
20	Highland (Brown Top Bent)
Sowing rate: 40-70 grams per m ² Cutting height: down to 5mm	

Supreme Cricket Wicket

This mixture offers a combination of two high quality fine-leaved perennial ryegrasses that make it an excellent choice for renovating cricket wickets and other summer sports areas before, during and after the season.

%	Species
50	Dwarf Amenity Ryegrass (STRI listed)
50	Dwarf Amenity Ryegrass (STRI listed)
Sowing rate: 30-40 grams per m ² Cutting height: down to 20mm	

Supreme Cricket Outfield

A quick establishing, economical, mixture which will create a compact hard-wearing sward with good appearance. Perfect for summer play and tolerant to close mowing; this mixture offers excellent value for money.

%	Species
45	Dwarf Amenity Perennial Ryegrass (STRI listed)
30	Creeping Red Fescue
20	Chewings Fescue
5	Brown Top Bent
Sowing rate: 30-40 grams per m ² Cutting height: down to 20mm	

Amenity Fertiliser

6-9-6 Pre-seed Fertiliser

A quality NPK fertiliser which is ideal for use on areas before or after seeding. It contains a low, balanced amount of nutrients which will help avoid any scorch to young & tender grass as it slowly releases over a 6-week period.

The combination of the 3 macronutrients (nitrogen, phosphate and potassium) help plants grow healthily and produce a higher crop yield.

9-7-7 Spring Summer

The perfect choice when treating any grass area (from sports fields to fine lawns) in the warmer months.

Quality, fast acting spreadable compound fertiliser with 2-3mm granules offers an excellent spreading pattern. You can expect the nutrients to be released slowly over a 6-week period which avoids any rapid top growth and repeated mowing. Apply by hand or through a spreader in mid-season on areas subject to intense use.

3-12-12 Autumn Winter

A quality NPK fertiliser, which is ideal for use in the Autumn and Winter on any grass area such as lawns, paddocks and pastures.

This is a quality, fast acting spreadable blended fertiliser with 2-5mm granules designed for the Home & Garden and Amenity markets. Whilst it is commonly used during the cooler periods, Nutrigrow Autumn can be used all year round if you require a product with a low level of nitrogen.

20-10-10 Paddock

A quality NPK fertiliser which has been the standard treatment for paddocks and pasture for many years. It is ideal for general maintenance or to feed grass for intensive hay production and grazing.

For a general feed we recommend 2 bags per acre (40kgs). If the area is going to be used to grow hay, or intensively grazed, then look to apply 3 bags per acre (60kgs). 20-10-10 can be kept in storage until you require it providing it is stored in a dry and well-ventilated area.

10-2-2 Feed, Weed, Moss

A compound fertiliser with iron for moss and weed control in lawns, sports turf and grass areas. Ideal for use in lawns as a four in one; it will make lawns greener, kill a range of weeds, remove moss & fertilise the grass for a thicker and healthier looking lawn.

Feed, weed & Moss Killer can be used from Spring to Autumn when grass, moss and weeds are actively growing and soil is moist.

Bluegem 1L

A food grade blue dye that is mixed in the spray tank with herbicides and pesticides to help improve accuracy. An integral part of spraying, Bluegem will identify the sprayed area by temporarily dyeing the area.

The treated area stays blue for a few days after application (how long it remains will depend on the surface) and then fades with sunlight or washes away with rain.

Using a spray indicator, such as Blue-gem, will in turn save you money and time as you are not missing any areas or overdosing any areas by spraying more than once.

CSS & SFI

Specialist Crops to Enhance your Farmland

The Sustainable Farming Incentive (SFI) and Countryside Stewardship Scheme (CSS) continue to become an integral way for farmers and landowners to adopt environmentally friendly practices.

The schemes continue to offer sizeable financial rewards encouraging the promotion of biodiversity, climate change, animal health and general overall improvement of the environment in rural areas.

Below we offer a wide range of mixtures which comply, and in some cases the mixture qualifies for both schemes.

We offer a wide range of cover crop, herbal ley and grassland options.

It is vital to choose the right mixture in order to comply, as there are a range of grasses, herbs and wildflowers to choose from.

The rules are much more vague and simple, offering more choice and freedom for the customer to decide on what to sow. Please don't hesitate to ask for any further advice or bespoke mixing if required.

AB: Arable Mixes

(pollen and nectar mixes, field margins and bird cover)

AB₁ Nectar Flower Mix with Vetch & Lucerne

AHL1 NUM2

- Very popular grass-free mixtures designed for the schemes. Highly effective in producing an abundance of flora between early and late summer to encourage insect and small mammal activity.
- Best sown from late March to early April onwards, when soil temps are 9°C or more.
- Regular topping is required in the first year to control weed growth.
- A superb pollen and nectar producing mixture containing lots of diversity.

%	Species	%	Species
8	Alsike Clover	0.5	Wild Carrot
3	Birdsfoot Trefoil	0.5	Black Knapweed
8	Lucerne (pre innoc.)	1	Yarrow
40	Common Vetch	0.75	Oxeye Daisy
18	Red Clover	0.25	Musk Mallow
10	Sweet Yellow Blossom Clover	Seed rate: 5 Kgs / Acre or 12 Kgs / ha 5 Kgs / Acre Pack	
10	Common Sainfoin		

AB₈ Flower Rich Margins 10% Weight Flowering Species

NUM2
IPM2

- Flower rich areas give fabulous colour and diversity, thus creating an abundant supply of pollen and nectar rich flowers through the season.
- A superb mix containing many wild flowers as 10% by weight of the mixture.
- Only to be used on arable land, temporary grassland areas or bush orchards.
- Suggest that you cut/top in August/September and again possibly in March/April.

Grasses		Flowering Species	
%	Species	%	Species
3	Crested Dogstail	1.00	Yarrow
2	Smooth Stalked Meadow Grass	0.50	Salad Burnet
20	Sheeps Fescue	1.00	Phacelia
36	Red Fescue	0.25	Oxeye Daisy
20	Chewings Fescue	0.50	Vipers Buglos
5	Meadow Fescue	0.50	Corn Cockle
4	Timothy	1.00	Wild Carrot
Seed rate: 8 Kgs / Acre or 20 Kgs / ha 8 Kgs / Acre Pack		2.50	Vetch
		0.50	Meadow Sweet
		0.50	Common Mallow
		1.00	Sainfoin
		0.50	Agrimony
		0.25	Red Clover

Disclaimer: Flowering species are liable to change throughout the season, however there will always be 10 included.

AB9 One Year Wild Bird With Sunflowers

AHL2 NUM2

- This mix provides an excellent feed source for birds plus superior cover. It encourages bird and mammal populations, as a result of prolific insect activity.
- Contains a good blend of cereal, sunflowers, brassicae and other species to ensure a quality food source throughout the winter months.
- Best sown from late spring to mid summer in to a clean, weed free seed bed.

%	Variety	%	Variety
15	Sunflower	8	Mustard
60	SP. Triticale	7	Millet
5	Fodder Radish	Seed rate: 20 Kgs / Acre or 50 Kgs / ha 20 Kgs / Acre Pack	
5	Linseed		

AB9 Two Year Wild Bird Cover

AHL2 NUM2

- This mixture contains a diverse range of species which will produce large amounts of shedded seed.
- It has the potential to provide 2 years of feed and cover for farmland birds such as Grey Partridge and Tree Sparrows.
- An increasingly popular and economical option for those looking to meet the requirements of the AB9 options available.

Two Year Option 'A' (no Sunflower)		Two Year Option 'B' (with Sunflower)	
%	Variety	%	Variety
65	SP. Triticale	60	SP. Triticale
8	Quinoa	15	Sunflower
7	Kale/Kale x Rape Hybrid	8	Quinoa
10	Fodder Radish	4	Kale/Kale x Rape Hybrid
10	Millet	8	Fodder Radish
		5	Millet

Seed rate: 20 Kgs / Acre or 50 Kgs / ha
20 Kgs / Acre Pack

Please note that these mixtures meet mid-tier requirements. Requirements for a higher tier agreement for this AB9 option may sometimes differ slightly if they are site specific. All mixtures can be tailored to your particular agreement specifications. Please get in touch to discuss.

AB12 Winter Bird Supplementary Feed

The objective of AB12 is to provide important additional food resources to farmland birds in both late winter and early spring. AB12 is the provision of varying bird feed mixes to supplement existing wild bird feed mixtures on farm holdings. Ideally an AB12 mix should contain at least 30% by weight of at least three of the following: Linseed, Red and White Millet, Sunflower Hearts, Canary Seed, Oil Seed Rape plus the addition of cereal grains (Maize is not allowed).

We offer a range of options that will encourage populations of Tree Sparrow, Grey Partridge, Corn Bunting, Yellow Hammer and Linnet.

NB. The maximum percentage of any of the above five small seed components allowed in an AB12 mix is 50%

AB15 Two Year Legume Fallow

NUM2
NUM3

(No grass content)

This mixture reduces flowering blackgrass and provides an abundant supply of pollen and nectar-rich flowers between early and late summer for the duration of the agreement. It also naturally boosts soil fertility and increases nitrogen levels due to the high red clover content.

%	Variety
5	Alsike Clover
2	Yellow Trefoil
50	Common Vetch
10	Lucerne
13	Sweet Yellow Blossom Clover
20	Red Clover
Seed rate: 10 Kgs / Acre or 25 Kgs / ha 20 Kgs / Acre Pack	

AB15 Economy Two Year Legume Fallow

NUM2
NUM3

(No grass content)

%	Variety
10	Alex Berseem Clover
20	Contea Crimson Clover
50	Vetch
10	Sainfoin
5	Alsike Clover
5	Sweet Yellow Blossom Clover
Seed rate: 10 Kgs / Acre or 25 Kgs / ha 20 Kgs / Acre Pack	

AB15 option with grasses is available on request.

GS: Grassland Mixes

GS₃ Ryegrass Seed Set / Winter Bird Food NUM2

- A dual purpose high-flying mix, suitable for hay or silage and also providing bird food throughout the winter.
- Very easy to establish and grow and will last for 4 years or possibly longer.
- Higher Tier and ELM.

%	Species
25	Hybrid Perennial Ryegrass
25	Hybrid Ryegrass
25	Intermediate Perennial Ryegrass
25	Late Perennial Ryegrass
Seed rate: 15 Kgs / Acre or 37.5 Kgs / ha 15 Kgs / Acre Pack	

GS₄ Legume & Herb Rich Sward SAM3 NUM2

- Superb mix containing 5 Grass, 4 Legumes & 4 Herb species.
- Provides enhanced food supplies and habitats for invertebrates.
- Improves soil structure by improving natural drainage.

5 Grass Species	
Weight	Species
2kg	Int Ryegrass
3kg	Late Ryegrass
0.8kg	Meadow Fescue
1kg	Timothy
0.3kg	Cocksfoot
0.8kg	Tall Fescue

4 Legume Species	
Weight	Species
1.5kg	Red Clover
1.5kg	Sainfoin
0.5kg	Alsike Clover
0.2kg	Sweet Yellow Clover

4 Herbal Species	
Weight	Species
0.5kg	Ribwort Plantain
0.4kg	Sheeps Parsley
0.3kg	Yarrow
1.2kg	Burnet

GS₄ Legume & Herb – No Grasses SAM3 NUM2

- Provides food and habitats for invertebrates. Legume content maximises nitrogen production.
- High disease and stress tolerance.

4 Legume Species	
Weight	Species
1.4kg	Red Clover
1.5kg	Sainfoin
0.5kg	Alsike Clover
0.2kg	Sweet Yellow Clover

4 Herbal Species	
Weight	Species
0.5kg	Ribwort Plantain
0.4kg	Sheeps Parsley
0.3kg	Yarrow
1.2kg	Burnet

In 2 acre packs of 12 kilos each

GS8(i) Species Rich Grassland – Legumes & Wildflowers NUM2

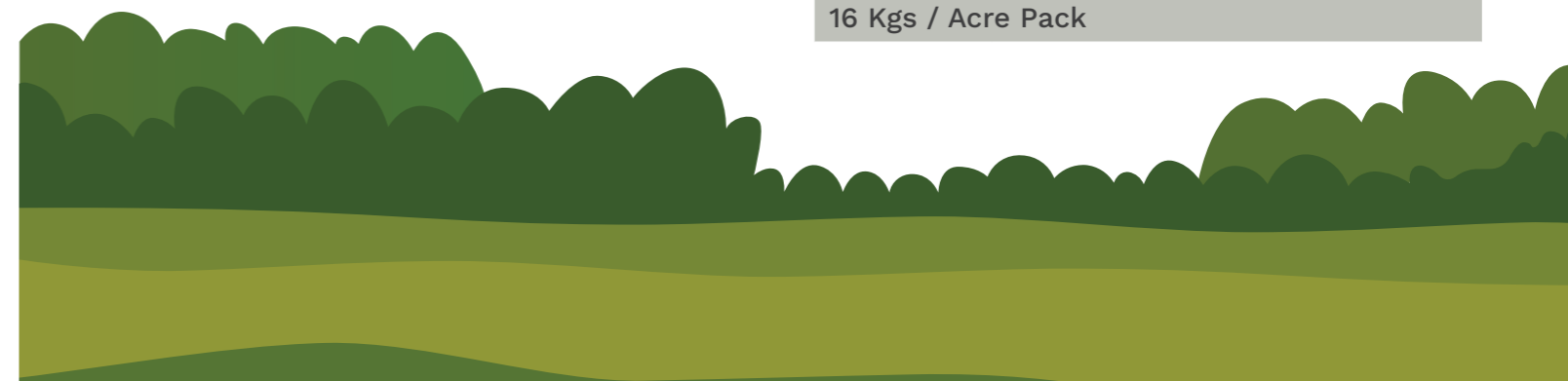
- Contains UK native wildflower seed & low maintenance grass species common to our natural landscapes.
- This mix will provide a large amount of pollen & nectar rich plants across the year, plus good habitats for insects and farmland birds.
- It will stabilise soils and help reduce surface runoff, thus limiting erosion.

%	Species	%	Species
5	Cocksfoot	1	Black Medick
35	Red Fescue	1	Alsike Clover
8	Smooth Stalked Meadow Grass	2	Yellow Trefoil
15	Chewings Fescue	0.3	Common Sorrel
2	Meadow Foxtail	0.7	Wild Carrot
10	Sheeps Fescue	1	Oxeye Daisy
10	Crested Dogstail	1	Knapweed
8	Timothy	Seed rate: 10 Kgs / Acre or 25 Kgs / ha 10 Kgs / Acre Pack	

GS8(ii) Species Rich Grassland – Grasses Only NUM2

- An economical and eco-friendly option without wildflower and legume content.
- Best established from late March to early September.
- Like the GS8 (i) option above, this mixture is for higher tier schemes and ELM.

%	Species	%	Species
3	Bent Grass	2	Meadow Foxtail
45	Red Fescue	5	Small Leaved Timothy
15	Chewings Fescue	10	Sheeps Fescue
10	Crested Dogstail	10	Smooth Stalked Meadow Grass
Seed rate: 16 Kgs / Acre or 40 Kgs / ha 16 Kgs / Acre Pack			



SW: Soil & Water

sw₁ 4/6 Metre Grass & Buffer Strip AHL4 NUM2

- An exceptional low maintenance field margin mix for CSS & ELM schemes.
- To be sown around the edges of cultivated fields, between the productive part of the field and an existing feature or habitat.
- It will provide protection for existing and creation of new habitats. It will also form habitat networks for small mammals, invertebrates and birds by creating links or corridors between sites.
- If next to a watercourse it will also prevent pollutants such as fertilisers from being transported in surface water runoff.

%	Variety	%	Variety
20	Timothy	10	Smooth Stalked Meadow Grass
20	Meadow Fescue	10	Chewings Fescue
25	Red Fescue	10	Cocksfoot
5	Common Bent	Seed rate: 10 Kgs / Acre or 25 Kgs / ha 10 Kgs / Acre Pack	

sw₄ Watercourse Buffer Strip / Cultivated Land AHL4 NUM2

- Creates a varied species cover by nature, including 5 different indigenous grasses.
- Suitable for field margins and corners to protect hedges, ditches and watercourses from nitrate run-offs, erosion and pesticides.

%	Variety
15	Tall Fescue
20	Sheep / Hard Fescue
20	Timothy
10	Smooth Stalked Meadow Grass
35	Creeping Red Fescue
Seed rate: 10 Kgs / Acre or 25 Kgs / ha 10 Kgs / Acre Pack	

sw₇ Arable Reversion, Grassland Recreation Mix AHL4 NUM2

- Containing a variety of low maintenance traditional grasses which are easy to establish and maintain on most soil types.
- This mix will require minimum management whilst retaining suitable green cover in keeping with the local landscape and also help to stabilise the soil.
- A wise investment for soil improvement, and erosion control.

%	Variety
20	Meadow Fescue
10	Smooth Stalked Meadow Grass
15	Sheeps Fescue
20	Timothy
5	Common Bent Grass
25	Red Fescue
5	Crested Dogstail
Seed rate: 12 Kgs / Acre or 30 Kgs / ha 12 Kgs / Acre Pack	

OP: Organic Mixes

OP₁ Overwintered Stubble Mix NUM2

- This mix will create a winter food source for seed-eating birds and an excellent foraging habitat for small mammals.
- Greatly enhances the number of farmland birds using overwintered stubbles.
- Provides good overwinter stubble management following the harvest of combinable crops.

%	Variety
70	Organic Forage Rape or Organic Mustard
30	R/C Stubble Turnip
Seed rate: 4 Kgs / Acre or 10 Kgs / ha 4 Kgs / Acre Pack	

OP₄ Organic Multi Species Legume/Grass Ley NUM2

- This mixture option is based on the results of considerable research and is designed to encourage pollinators and other insects through the inclusion of multiple species and a long flowering period from April until August. The advantage of legumes as a food source for pollinators is also now recognised and this mix means more of us can “do our bit” to encourage pollinators and sustain food production.
- The inclusion of multiple legumes is advantageous as it has been proven to also significantly improve forage yields.
- This complex mixture builds soil fertility and improves inherent soil structure.

%	Variety	%	Variety
23	Organic (Late Dip)	4	Sainfoin
23	Organic (Int Tet)	3	Chicory
12	Organic Red Clover	1	Yarrow
4	Org Meadow Fescue	4	Ribwort Plantain
8	Organic Timothy	3	Burnet
4	Tall Fescue	1	Sheeps Parsley
3	Yellow Trefoil	4	Cocksfoot
3	Alsike Clover		
Seed rate: 14 Kgs / Acre or 35 Kgs / ha 14 Kgs / Acre Pack			

OP₂ Wild Bird Seed Cover Mix AHL2

- A 2 year Organic wild bird seed option.
- Sow late spring to early summer to give seed shedding in Autumn and right through the winter for feed. The multi inclusion of species provides feed and cover well in to the second year.
- This mix will attract a range of farmland birds, small mammals and insect life.

%	Variety
65	Organic Triticale/Barley
5	Organic Mustard
3	R/C Kale
4	R/C Quinoa
10	R/C Linseed
10	R/C Fodder Radish
3	R/C Red/White Millet
Seed rate: 20 Kgs / Acre or 50 Kgs / ha 20 Kgs / Acre Pack	

OP₅ Organic Nectar Flower Mix AHL1 NUM2

- An exceptional blend designed to provide a varied eco-friendly environment for the proliferation of bird, insect and mammal activity.
- Designed to attract and boost the populations of nectar-feeding insects, including butterflies and bumblebees.

%	Variety	%	Variety
58	Organic Red Clover	10	Sainfoin
8	Organic Timothy	7	Alsike Clover
4	Org Meadow Fescue	2	Black Knapweed
10	Yellow Trefoil	1	Musk Mallow
Seed rate: 6 Kgs / Acre or 15 Kgs / ha 6 Kgs / Acre Pack			

Wildflowers

Mixes for a range of soil types and situations

There is not a season of the year when our countryside is not decorated by one or another of the many attractive native wildflower species which flourish in the woods, hedgerows, meadows and marshlands of the U.K.

Thankfully more and more people are recognising the importance of preserving and enhancing our country's wild flora. This has seen a big increase of agri-environmental agreements in recent years encouraging the sowing and re-establishment of many wildflower species.

As a result of this very encouraging agenda, plus a significant rise in general public interest, we have designed a number of options for those planning to establish eco-friendly areas on farmland and other specialist locations.

We can provide mixes for any manner of options, please just ask.

We offer the facility to design your own tailor-made wildflower, herb and indigenous grass mixtures.

Key Factors to Consider:

- Soil type, fertility and location
- Colour, species diversity, suitability and compatibility in relation to the site in question
- Practicality in terms of overall cost and ease of permanent establishment
- The importance of getting a good balance over time between the different species of wildflowers and grasses
- Creating an environment for all sown flora to be in total harmony with insects, birds and mammals.

Growing Guide

Establishment of wildflower mixes are not always immediate. Full establishment can sometimes take up to two or three years depending on the competition of the mixture, site conditions, soil type, and husbandry input. Maintenance and management also has a major impact on good establishment.

Key Factors to Consider:

• Soil Suitability:

For all mixtures the soil suitability should be taken in to account. It is helpful if the pH (acidity/alkalinity) of the soil is known, plus knowledge of the soils nutrient content (e.g. P & K).

Wildflower mixtures generally persist well in areas of low fertility. If the soil is highly fertile it may be necessary to remove or strip existing topsoil and sow on to sub-soil.

• Seed bed preparation:

This is the most important aspect of wildflower establishment. Whilst annual flowers and grasses will germinate readily, some of the biennial and perennials take longer.

• Sowing rates:

Sowing rates vary from 2 to 5 grams per square metre for most grass/wildflower mixtures. For mixture specific sowing rate details please get in touch. Beware of sowing at a lower rate than is necessary as this can allow weed ingress.

• When to sow:

A good time for sowing mixtures is generally considered to be late summer or early autumn when seeds are shed naturally, the soil is warmer and moisture is usually present in sufficient quantity to aid good germination. Annual flower mixtures sown in early autumn should flower from May/June the following year.

Double sowings, one in autumn and one in spring on the same site produce prolonged colour throughout the summer and autumn. It may be necessary to re-seed areas of annual wildflowers at a reduced seeding rate in the autumn of the year of flowering in order to maintain the diversity of species and colour over a longer period of time.

The window in spring or early summer is also a viable period to sow wildflower/grass mixtures. Consideration must be made at this time for potentially greater weed competition in the seed-bed and possibly experiencing sustained dry periods. Both factors can at times be detrimental to strong and full establishment.

• Management and Maintenance:

As a meadow develops, the annual flowers can disappear or reduce in number whilst the perennials become more prominent. It is possible to overseed with annuals. Areas must be cleared of cover prior to seeding.

It is not recommended to fertilise as this will reduce the vitality of the herb and flower content of the meadow. (Light stock grazing will fertilize naturally although it may be necessary to lightly harrow after spring graze to drag and spread manure evenly over the field.)

Germination of wildflower seeds can be erratic and some species require vernalisation before germination in spring of the following year, (i.e. a period of prolonged cold temperatures). Maintenance in the first year after sowing should be restricted to a high cut in late summer. This can then be followed by an early spring cut in the second year to remove any debris.

If the intention is to take a hay crop in the second year, a light graze or topping in the spring should be followed by shutting off to allow full development of the crop, and maximise seed shedding of all species.

If hay is taken, it is not usual to graze the aftermath. A topping in late autumn should tidy the area. The aftermath can be lightly grazed to tidy only after full re-growth has taken place. (Meadow mixtures that are heavily grazed tend to revert to a pure grass sward after a period of time – so avoid aftermath grazing by livestock to preserve the wildflower/herb content).

Flowering Meadow - Fine & Luxurious

80% Grasses + 20% Wildflowers

An outstanding mixture designed for amenity areas and containing a wide range of reliable perennial species together with fine-leaved grasses. This mix will produce a vibrant and colourful canopy.

Consider the option of adding the Herbal or Cornfield Annuals Mix to further enhance diversity and colour.

80% Grasses		20% Wildflowers	
%	Species		
20	Sheeps Fescue	Oxeye Daisy	Lady's Bedstraw
35	Chewings Fescue	Yarrow	Self Heal
10	Crested Dogstail	Red Campion	Vipers Buglos
5	Common Bent	St John's Wort	Musk Mallow
10	Slender Red Fescue	Meadow Buttercup	Common Sorrel
		Black Knapweed	Yellow Rattle
		Wild Carrot	Agrimony
		Cowslip	Ribwort Plantain
		Meadow Sweet	Common Birdsfoot Trefoil
		Meadow Clary	Salad Burnet
Suggested Sowing Rate: 2-3 grams per m ²			

Flowering Meadow - Loamy & Lighter Soils

85% Grasses + 15% Wildflowers

A specialist mixture for loams, calcareous and lighter soils which provides a lengthy flowering period with a range of colour and a wide variety of species.

The species in this mix are non-injurious to livestock and palatable if very lightly grazed.

85% Grasses		15% Wildflowers	
%	Species		
3	Sainfoin	Oxeye Daisy	Common Sage
15	Meadow Fescue	Birdsfoot Trefoil	Wild Carrot
28	Creeping Red Fescue	Red Clover	Common Sorrel
8	Crested Dogstail	Meadow Buttercup	Red Campion
20	Sheep's Fescue	Ladies Bedstraw	Self Heal
9	Timothy	Ribwort Plantain	Cornflower
2	Meadow Foxtail	Poppy	Black Medick
		Corn Cockle	Wild Marjoram
Suggested Sowing Rate: 2-3 grams per m ²			

Flowering Meadow - Heavier & Damp Soils

85% Grasses + 15% Wildflowers

Specifically designed for heavier, wetter locations where poor drainage is prevalent. This mix provides an abundance of colour and persistence in poorer fertility situations.

Utilisable by livestock or, alternatively, can be left to evolve as a cutting meadow with all its floral attributes.

85% Grasses		15% Wildflowers	
%	Species		
20	Meadow Fescue	St John's Wort	Betony
8	Late Diploid Pasture Perennial	Meadow Sweet	Common Pire
25	Strong Creeping Red Fescue	Agrimony	Wild Carrot
15	Smooth Stalked Meadow Grass	Ribwort Plantain	Common Sorrel
10	Timothy	Dropwort	Vipers Buglos
2	Yorkshire Fog	Oxeye Daisy	Black Knapweed
5	Meadow Foxtail	Birdsfoot Trefoil	Foxglove
		Cornflower	Black Medick
		Poppy	Self Heal
Suggested Sowing Rate: 2-3 grams per m ²			

Flowering Meadow - Pond Edge & Water Margins

80% Grasses + 20% Wildflowers

A mixture containing 20 plus specially selected species suitable for sowing at the margins of ponds, streams, ditches, watercourses and wetter, damper soils.

80% Grasses		20% Wildflowers	
%	Species		
3	Meadow Foxtail	Pendulous Sedge	Water Avens
4	Small Leaved Timothy	Common Rue	Bluebell
8	Crested Dogstail	Yellow Flag Iris	Meadow Sweet
5	Yorkshire Fog	Meadow Buttercup	Dropwort
7	Creeping Bent	Purple Loosestrife	Peppercorn
12	Smooth Stalked Meadow Grass	Black Knapweed	Yellow Rattle
1	Sweet Vernal Grass	Oxeye Daisy	White Campion
20	Chewings Fescue	Self Heal	Ribwort Plantain
20	Slender Red Fescue	Lady's Bedstraw	Kidney Vetch
		Salad Burnet	
Suggested Sowing Rate: 2-3 grams per m ²			

Flowering Meadow - Woodland, Hedgerow & Shady Areas

80% Grasses + 20% Wildflowers

Containing 18 different species of wildflower this mix is a unique mix designed specifically for shady and partially shaded areas. It can be sown alongside hedgerows, under trees or within established woodland areas.

80% Grasses		20% Wildflowers	
%	Species		
20	Crested Dogstail	Bluebell	Hedge Bedstraw
14	Wood Meadow Grass	Teasel	Wood Avens
1	Sweet Vernal Grass	Wild Carrot	Yarrow
22	Chewings Fescue	Self Heal	Black Knapweed
8	Common Bent Grass	Cowslip	Foxglove
15	Slender Red Fescue	Kidney Vetch	St Johns Wort
		Red Champion	White Champion
		Burret Saxifrage	Meadow Buttercup
		Common Sorrel	Agrimony

Suggested Sowing Rate:
3 to 4 grams per square metre

100% Wildflowers - Native Meadow Annuals

A superb annual mix providing a vivid colourful display from late May until early September. Meadow annuals can be sown as a single element or added to existing established meadows. It can be used as an excellent supplement to mixes with biennial and perennial species or just re-planted regularly in one area. (We advise taking our corn cockle if the area is to be used for grazing or hay).

%	Species	%	Species
40	Cornflower (blue)	10	Corn Poppy (red)
30	Corncockle (pink/purple)	2.5	Corn Chamomile (white)
15	Black Medick (yellow)	2.5	Corn Marigold (yellow)

Suggested Sowing Rate:
1 to 2 grams per square metre

100% Wildflowers - Luxurious Native Annuals & Perennials

%	Species	%	Species	%	Species
12.5	Oxeye Daisy	10	Viper's Buglos	2.5	Meadow Buttercup
10	Lady's Bedstraw	5	Yellow Rattle	1.25	Musk Mallow
10	Yarrow	5	White Champion	1.25	Common Sorrel
10	Ribwort	5	Birds foot Trefoil	1.25	Cowslip
10	Wild Carrot	3.75	Black Knapweed	1.25	Agrimony
1.25	Red Champion	3.75	Meadow Sweet	1.25	Common Mallow
5	Self Heal				

Suggested Sowing Rate:
1 to 2 grams per square metre

Spring Sowing:

Year 1: Cut in August/September to tidy

Year 2: Mow or a very light graze in early March then shut off to develop.

Cut after annuals have flowered and shed seed. A very light aftermath graze in the autumn may help.

Annuals:

Germinate, flower and die within one year, therefore colour is achieved within its first season of planting, and seed is shed. Examples include Cornflower, Corn Marigold, and Field Poppy.

Perennials:

They can take up to two or three years to flower, and then continue for many years thereafter. (If you are expecting first year colour then inclusion of an annual element in a mixture is advisable). Examples include Knapweed, Lady's Bedstraw, Oxeye Daisy.

Biennials:

Biennial plants grow only foliage the first year, go in to dormancy overwinter, and flower the second season to complete their lifecycle. Examples include White Champion, Foxglove, Dark Mullein.

Autumn Sowing:

Year 1: Leave to fully establish.

Year 2: Either mow or very lightly graze with livestock.

Gently graze at low stocking rate or top in August/September once flowering/seed shedding has occurred.

From autumn sowing, a mixture should be allowed to develop until the grasses have seeded and any annual flowers have flowered and seeded in the following year.

Year 3: Graze very lightly in early spring and then shut off to allow flowering of perennials.

Hay cut can be taken from mid-July onwards and possibly aftermath grazed in later autumn.

After sowing it is advised to rake or lightly harrow the area then consolidate/compact gently. Don't sow too deeply as most wildflower seeds germinate on or near the surface of the soil.

Catch Crops

High quality root seed mixtures giving top 'in field' performance

The Supreme range of catch crop mixtures are specifically designed to provide green feed and bumper crops of highly nutritional dry matter for ruminant livestock.



Supreme Catch Crop

Contains (per acre):	
35%	Forage Rape R/C
65%	Samson / Delilah Stubble Turnips R/C
Packed in 5kgs per 2 Acre Pack	

- Sow at 2 to 3 kilos per acre (dependant on whether broadcasting or drilling) Packed in multiples of 5 kilo packs.
- Sowing window: May to very late August.
- Optimum utilisation period starts at 10 to 12 weeks from sowing.
- Best suited to sheep enterprises - i.e. finishing lambs, or as late autumn and early/mid winter sheep keep.
- Ideal for sequential sowing, to provide liberal levels of D.M. forage when grass quality subsides and to feed "in situ" at the onset of winter.

Supreme Maxi Leaf

Contains (per acre):	
35%	Interval (Hybrid Kale X Rape) R/C
50%	Forage Rape R/C
15%	Kale Seed (Thiram)
Packed in 5kgs per 2 Acre Pack	

- Primarily for Cattle.
- Sow at 2 to 2.5 kilos per acre. Packed only in multiples of 5 kilo packs.
- Sowing window: May to mid August.
- Optimum utilisation period starting at 9 to 11 weeks from sowing.
- Best suited for beef cattle, young stock or dairy farmers.
- Ideal for droughty locations where grass is short in summer or early autumn.

Supreme Rapid Crop

Contains (per acre):	
31.25%	Forage Rape R/C
6.25%	Kale Seed (Thiram)
12.50%	Red Clover
12.50%	Fodder Radish R/C
6.25%	Green Globe Turnip R/C
31.25%	Mustard Seed R/C
Packed in 5kgs per 1 Acre Pack	

- Sow at 4 kilos per acre. Packed in 4 kilo (one acre) packs.
- Sowing window: Late April to mid August.
- Designed initially to provide a very quick dense cover for game crop areas, but the mixture's flexibility means it can also double up as a livestock feed.
- A superb "Planning" choice on the unit where game crops and livestock enterprises are managed alongside each other.
- Finally, an excellent "Fire brigade" patching option for areas where other game crops have not established so well.

Supreme 'Mid' Winter Keep

Contains (per acre):	
15%	Interval (Hybrid Kale X Rape) R/C
15%	Green Globe Turnip R/C
45%	Samson / Delilah Stubble Turnips R/C
25%	Kale Seed (Thiram)
Packed in 5kgs per 2 Acre Pack	

- Sow at approx 2 kilos per acre. Packed in 4 kilo packs, i.e. 2 acre packs.
- Ideal sowing window: Early June to mid August.
- This gives an optimum utilisation period of late autumn through to late January/ early February.
- Principally a winter based sheep keep mixture that is cheap to establish and gives an abundant quantity of green feed from late October/ November onwards.

Supreme Late Winter Keep

Contains (per acre):

45%	Interval (Hybrid Kale X Rape) R/C
25%	Samson / Delilah Stubble Turnips R/C
15%	Kale Seed (Thiram)
15%	Green Globe Turnip R/C

Packed in 5kgs per 2 Acre Pack

- Best sown at approx 2.5 kilos per acre (Packed in 5 kilo packs)
- Sowing window of late May to early August (i.e. ideal after ploughed out leys, after winter barley or wholecrop)
- The best planned utilisation period is from late December through to late March
- The mixture contains highly durable brassicae species most suited to mid/late winter sheep keep management
- Timing of utilisation is obviously influenced by sowing date but remember, for best establishment, sow by late July if possible
- Fills the “Hungry Gap” period in winter and is primarily designed for sheep systems
- Out-wintered cattle can also perform extremely well on the Supreme Late Winter Keep mixture

Yield Potential:

	DM/Ha	CP%	D-Value
Stubble Turnips	4.5t	17	69
Maincrop Turnips	6.0t	9	80
Swede	8.5t	11	82
Fodder Beet	14.0t	12	78
Kale	9.0t	17	68
Forage Rape	4.5t	19	68
Hybrid Rape/Kale	6.0t	19	68

Cover Crops

Cover crops are fast becoming a beneficial way to avoid the reliance on inputs such as fertilisers and now play a crucial role in sustainable agriculture.

The benefit of improving soil structure and fertility is becoming more important when relating to climate change and the uncertainty that comes with it.

As more research goes into cover cropping, we are seeing the positive effects it has on crop yields, and this further underlines the importance of investing in the practice.

Pest management, reduced stress on main crops, and increased biodiversity all contribute to the growing importance of cover crops, particularly in arable farming.

Supreme Cover Crop / Greening Mixtures

Booster

A non brassicae mix providing rapid cover, N and soil OM enhancement.

Contains 12.00kg per pack:

Vetch	Persian Clover
Black Oats	Berseem Clover
Phaceila	

Sow at approx 12kg/acre (30kg/hectare)

Flyer

A low cost Brassicae mixture, giving extremely quick growth and ground cover. Superb root development helps to maximize bio-mass in the short term. Excellent results in terms of a sizeable DM contribution with potential livestock utilisation.

Contains 4.00kg per pack:

Interval (Kale X Rape)	Mustard
Green Glove / Stubble Turnip	Oil / Fodder Radish

Sow at approx 4kg/acre (10kg/hectare)

Decoy

Rapid cover provided with nematode multi resistant components, plus impressive soil structure improvement.

Contains 8.00kg per pack:	
Oil Radish (multi-resistant)	Mustard
Phacelia	Berseem Clover
Sow at approx 8kg/acre (ie 20kg/hectare)	

Marvel

An economically priced multi-purpose, non-Brassicae mix, Marvel certainly ticks all the boxes in terms of achieving major greening objectives.

Contains 12.00kg per pack:	
Vetch	Crimson Clover
Persian Clover	Black Oats
Phacelia	
Sow at approx 4kg/acre (ie 10kg/hectare)	

Companion

A specialist blackgrass control mixture for sowing into Winter Rape. Trapsley nutrients (inc. Nitrogen), improves soil porosity and friability. Evidence of reduced Slug + Fleabeetle activity by using this mixture type, plus reduction of grass weed populations.

Contains 20.00kg per pack (packed in 2 acre packs):	
Vetch	Berseem Clover
Sow at approx 6kg/acre (ie 15kg/hectare)	

Follower

Sow early into autumn stubbles, prior to planned spring cropping. Combines both exceptional growth with excellent extra overall bio mass contribution. Helps improve soil structure, particularly on heavier soils. Critically this mixture encourages grass weed (inc. Blackgrass) to establish in autumn within the sowncover crop. They can then be subsequently destroyed prior to spring sowing.

Contains 20.00kg per pack (packed in 2 acre packs):	
Vetch	Black Oats
Sow at approx 10kg/acre (ie 25kg/hectare)	

Panbusters

Two exceptional, yet economic, mixtures. Designed to improve sub surface drainage via root penetration whilst at the same time enhancing soil organic matter and residual N status.

P.B. (1) Contains 8.00kg per pack (packed in 2 acre packs):	
Tillage Radish	Berseem Clover
Sow at approx 4kg/acre (ie 10kg/hectare)	

P.B. (2) Contains 9.00kg per pack (packed in 2 acre packs):	
Tillage Radish	Oil / Fodder Radish
Berseem Clover	
Sow at approx 4.5kg/acre (ie 11.25kg/hectare)	

The Supreme range covers most growers' needs and choices. However, sometimes there is a REQUIREMENT FOR SPECIALIST MIXTURES. Remember, we are only too happy to oblige. If something is not detailed here or maybe other species for inclusion are wanted then just ask us to competitively produce your special mix requirements for you.

For further advice on all the best usage of all the above and appropriate seed rates, please ask for help.

Game Cover

Supreme Premium Game Cover

A high quality all purpose game mixture providing full season cover. Provides a range of food sources to attract both big and small birds. Robust and varied in its cover, making it a must for quality shoots.

Contents:	Kgs / Acre Pk
Sunflower	2.00
Buckwheat	3.50
Kale Seed	0.50
Maize Seed	2.00
Millet	1.50
Linseed	1.75
Vetches	1.75
Mustard	1.00
Seed rate: 14.00 kgs per acre pk	

Supreme Economy Game Cover

An exceptional mixture designed for rapid establishment at a sensible cost. An ideal choice for a limited budget or larger shoots with many acres to seed regularly. It creates a variety of cover types and provides a good mixture of food sources for all game bird types.

Contents:	Kgs / Acre Pk
Buckwheat	3.00
Forage Rape	0.75
Sunflower	1.50
Kale Seed	0.25
Linseed	1.50
Millet	3.00
Vetches / Tares	2.50
Seed rate: 12.50 kgs per acre pk	

Supreme Quinoa / Kale

A specialist blend of hardy Kale varieties, plus Quinoa. Provides both excellent cover and a high protein feed source via Quinoa. Suitable as a game strip on the field margins of arable land. It can also be used for Stewardship purposes. Our S.Q.K. mix is supplied in 5lb packs at a realistic seed rate, providing real value for money.

Contents:	Kgs / Acre Pk
Quinoa	1.00
Inka	0.50
Protect / Burley	0.75
Seed rate: 2.25 kgs per acre pk	

It can be sprayed with a residual herbicide pre-drilling but there is some risk to the Quinoa content.

Supreme Extra Hardy

A proven game cover blend for harsher sites and very open locations. Ideally suited to sporting estates and shoots in the North and Scotland.

A generous seed rate is recommended in order to ensure good, strong cover on known sites where establishment is often difficult.

Supreme Extra Hardy provides excellent cover and a diverse food source for birds.

Contents:	Kgs / Acre Pk
Tic Beans	4.00
Vetches	3.00
Buckwheat	4.75
Yellow Blossum Clover	1.25
Triticale (Spring type)	8.00
Linseed	2.50
Kale Seed	0.50
Seed rate: 24.00 kgs per acre pk	

Best sown from late April to mid June and can be utilised for brooding.

Supreme Rapid Crop

An outstanding blend specifically designed to provide quickly established, dense cover. Wide ranging sowing dates from May to mid/late August. Very useful to patch up earlier sown failures. It can double up as a livestock feed mixture, giving the user flexibility in planning cover and catch crops across a mixed unit.

Exhibits good drought tolerance. Shows versatility to broadcasting into standing cereal crops or onto winter cereal stubbles. The inclusion of fodder radish assists against Club Root, (brassicacae sickness), and boosts rapid establishment and therefore cover.

Contents:	Kgs / Acre Pk
Forage Rape	1.25
Kale Seed	0.25
Red Clover	0.50
Fodder Radish	0.50
Texel Greens / Green Globe Turnip	0.25
Mustard	1.25
Seed rate: 4.00 kgs per acre pk	

Could be sprayed with a residual herbicide pre-drilling, with some risk to the clover.

Supreme Nesting

Supreme Nesting mix is primarily chosen for longer-term use - minimum 2 to 3 years. Provides good accessible cover, particularly for smaller birds such as Partridge. Alternatively it can be sown around duck ponds and surrounding areas. Contains nectar producing plants that attracts an array of insects and small range mammal species compatible to small bird life.

- This mixture has a wide sowing window and can be sown from late March to early August, dependent on seed bed conditions and soil temperatures.

- After full establishment, we advise a very light 'topping' at the end of year one, to prevent lush growth in winter and possible plant kill.

Contents:	Kgs / Acre Pk
Sweet Yellow Blossom Clover	1.25
Longer term Red Clover	1.50
Crested Dogstail	1.00
Canary Grass (P, Aquatica)	0.75
Sainfoin	2.75
Timothy Grass	0.75
Cocksfoot	0.50
Seed rate: 8.50 kgs per acre pk	

Post emergence weed control available.

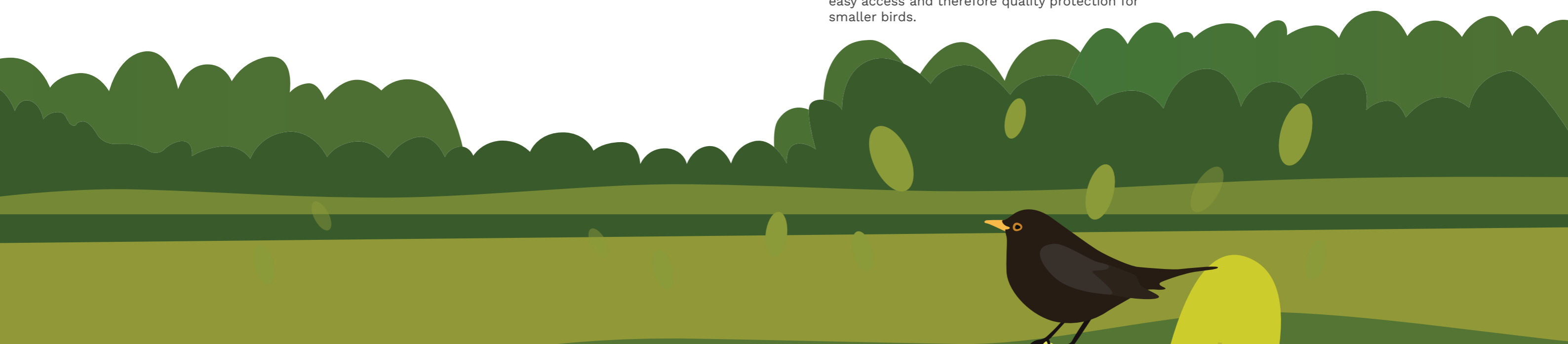
Supreme Bird Cover

A specialist small bird mix, ideal for Partridge and Quail. Produces an exceptionally good lower level cover that provides quality feed too. Establish from late April onwards. Very good performance over a range of differing sites and locations and is perfect cover for smaller species.

- Provides an excellent varied food source throughout the shooting season.

- Gives reasonable winter hardiness, whilst allowing easy access and therefore quality protection for smaller birds.

Contents:	Kgs / Acre Pk
Mustard	0.25
Linseed	5.50
Red/White Millet	3.00
Vetches	2.75
Kale/Rape Hybrid	0.50
Seed rate: 12.00 kgs per acre pk	



Wild Bird Food

Nyjer Seed

- Perfect for smaller birds
- Provides essential nutrients
- High in calories

Nyjer seed (also known as niger and nyger) is rich in essential nutrients and oils and high in fat. These seeds promote a healthy balanced diet all year round. Nyjer's high-calorie content is a great energy source for garden birds; particularly in the colder months. What is more, compared to other wild bird seed it is a superior source of fat, fibre and protein – a brilliant and delicious seed.

The release of oils in the seeds gives birds the calories they need to help them store fat in order to keep them warm and survive the colder months. Nyjer is particularly suited to small-beaked birds who are experts at eating these tiny seeds. They are experts at cracking them open with their pointed and sharp beaks. High in protein, nyger also helps with the regeneration of feathers.



Whole Peanuts

- 100% natural
- High energy source
- Rich in fats and vitamins

If you are looking to attract a variety of birds to your garden then our Premium Whole Peanuts are a great choice.

A very popular food source for wild birds all year round; especially in the colder months when natural food is harder to find.

Feed as part of a healthy balanced diet. Our Peanuts are very rich in oils, proteins, fats and essential vitamins and minerals such as niacin, folate, fibre, vitamin E, magnesium and phosphorus. These nutrients are essential for bird health and energy levels. They help maintain healthy feathers and sharp beaks.

Suitable for Blackbirds, Blue Tits, Finches, Doves, Sparrows, Robin, Thrushes, Starling but to name a few. You might also find squirrels, hedgehogs, foxes and other garden animals feeding on them too.



Sunflower Hearts

- Rich in natural oils
- High energy
- No mess

Sunflower hearts are sunflower seeds with the outer husk removed. They are a very popular straight wild bird feed as they are suitable for a number of different wild garden birds, including soft-billed birds.

Sunflower Hearts are a nutritious and calorie-dense feed, very high in energy, protein and natural oils that are essential for a healthy diet. A proven energy and protein source, this feed is ideal for all seasons but particularly in the colder months.

With the husk removed, hearts can be enjoyed without the birds wasting energy on cracking seeds open. In the winter months birds need to preserve their energy as much as they can.

The sunflower husks have already been removed, meaning they will leave little to no mess at your feeding area. They are therefore a great alternative to sunflower seeds and you are not wasting money on husks which can't be eaten whilst also giving your birds the same nutritional value.

This feed variety will attract an array of birds to your garden such as Blackbirds, Song Thrush, Tits, Finches, Sparrows, Starling and Robin.



Wild Bird Seed Mix

- Suitable for all year round
- 100% natural
- Provides essential nutrients

Our special Wild Bird Seed mixture contains a variety of seeds in order to provide essential and balanced nutrition for garden birds. We have carefully selected the ingredients to provide you with a complete mix which contains the ideal combination of nutrition and energy. This mix will see your birds through the challenging winter months and maintain that they are in peak condition for the breeding season.

The variety of seeds in this mix will attract a wide range of wild birds and encourage them to continue returning to your garden. From Dunnocks and Robins to Blackbirds and House Sparrows, and many other common UK native birds. This really is a popular feed for all.

Overall, this high-performance mix will boost energy levels and maintain overall bird health.

Our carefully blended mixture contains:

Whole Wheat, Kibbled Maize, White Millet, Black Sunflower, Red Dari, Whole Oats, Canary Seed, Whole Naked Oats and Barley.



Info / Glossary

Agricultural Grasses

Westerwolds Ryegrass

- Annual grass, 12 to 18 months duration
- Low temperature growth capability
- High yielding
- Winter hardiness

Italian Ryegrass

- 24 to 30 months duration
- Low temperature growth capability
- 3 to 4 high yielding cuts per year
- Produce up to 8 tonnes DM per acre

Hybrid Ryegrass

- A breeding cross between Italian Ryegrass and Perennial Ryegrass
- Capable of up to 15% more DM yield / ha / annum than Perennial Ryegrass
- Low temperature tolerance (4 C)
- Duration 36 to 48 months at good yield levels if well managed
- Ideal as a main component in leys of 3–4-year duration

Perennial Ryegrass

- Duration unlimited with good management
- Perennial ryegrass growth starts at 5 C to 6 C soil temperature
- Very tolerant of frequent grazing
- DM of up to 6 tonnes per acre over a long period.

Timothy

- The most versatile grass found in UK pastures
- Extremely persistent and disease tolerant
- Makes high quality Hay & Silage
- Attractive forage for all stock types.

Festololium

- Festololium is a cross between Meadow Fescue or Tall Fescue and Ryegrass
- Combines high quality from Ryegrass with good Winter hardiness & persistence from Fescues
- Tolerant to drought and flooding
- Very high yield of dry matter

Meadow Fescue

- Can be used in conjunction with Timothy to make Hay or graze.
- Persistent and drought tolerant
- Grows on all soil types
- Used as an alternative to Perennial Ryegrass as a less aggressive option

Cocksfoot

- The most drought resilient of all grasses
- Relied on for its perseverance
- Extremely deep rooting
- Useful addition to a traditional Hay mixture

Meadow Foxtail

- Early flowering, one of the first grasses to do so
- Contributes well in a Grazing or Hay mixture
- Performs best alongside slower growing, less invasive grasses
- Commonly found along roadsides, hedgerows and woodland

Sweet Vernal Grass

- Grows on a range of soil types
- Adds a sweet scent if used in a Hay crop
- To be sown during the warmer months
- Also grown as a lawn grass and a house plant

Tall Oat Grass

- A tall, fast-growing grass
- Suitable for Hay crop
- Found on road verges, along hedges and riverbanks.
- Palatable for livestock

Yellow Oat Grass

- Perennial grass of medium height
- Highly palatable to stock
- Suited to well-drained, neutral and calcareous soils
- Small, fine seed, so small amounts required in a mixture

Crested Dogstail

- Grows well on most soils
- Performs late into the season, when others species die away
- A “traditional” grazing grass
- Withstands cold & drought.

Legumes

Red Clover

- Generally shorter duration: 2 to 3 years
- Best 8 C to 9 C for DM growth
- Yield capability of 8 to 9 tonnes of DM / ha / annum
- Benefits: higher forage protein and forage mineral content than grass

White Clover

- Longer duration, particularly with “clean sward” management
- Options on agchem weed control now diminishing, but surprising resistance if well established
- Again need 8 C to 9 C temperatures for DM growth
- Yield capability 7 to 8 tonnes DM / ha / annum

Balansa Clover

- Well suited to high productive ryegrass mixtures.
- High quality forage.
- High yielding. Potential to yield even higher than Red & White Clover
- Grows best during spring time

Alsike Clover

- A shorter-term Clover with 2-3 years duration
- Performs well on heavier, acidic soils
- Flowers whitish or purplish becoming pinkish
- Nitrogen fixer

Berseem Clover

- Annual Clover with rapid establishment
- Nitrogen fixer
- Large amounts of biomass
- High protein forage

Crimson Clover

- Annual clover
- Enhances soil organic matter
- Fertility booster
- Attractive to pollinators

Persian Clover

- Annual Clover
- Nitrogen fixer
- Improve soil fertility within 6 months.
- Excellent regrowth in a short-term ley

Sweet Yellow Blossom Clover

- Produces large amounts of nectar, making it highly attractive to insects
- Also attracts birds & other wildlife
- Good green manure
- Adds huge amount of organic matter to soil

Sainfoin

- Extremely resilient & capable of growing in the harshest conditions
- Its deep roots are excellent at extracting nutrients from soil
- Excellent health benefits when grazed
- Weed suppressor

Vetch

- Annual that is also a nitrogen fixing legume
- Best sown in spring as not winter hardy
- Rapid establishment enable it to outcompete and suppress weeds
- High in protein & palatable

Lucerne

- High protein content
- Often grown with Meadow Fescue or Timothy as a companion grass
- Requires relatively high soil temperatures for DM growth (8 C to 10 C)
- Capable of up to 4 cuts/annum

Birdsfoot Trefoil

- Popular in Herbal Leys alongside other legumes
- Pollinator; attract Bees & Butterflies
- Withstands close grazing, trampling, and mowing
- Used along roadsides to control wind and water erosion

Yellow Trefoil

- Natural weed suppressor
- Nitrogen fixer
- Attracts Bees & a range of insects
- Tolerant to a range of soils

Lawns, Landscaping & Sports Grasses

Dwarf Ryegrass

- The most common and popular grass used across all Amenity situations
- Extremely high wear tolerance
- High disease tolerance
- Rapid germination of around 14 days
- Shade tolerant

Creeping Red Fescue

- An economical option used in the majority of Amenity mixtures.
- Shallow creeping roots help it to remain green even in dry, poor soils.
- Slow growing, ideal for areas that are inaccessible or verge / bank sides.
- Drought tolerant
- Average germination time of 21 days

Sheeps / Hard Fescue

- Grows on most soil types, even the poorest quality.
- Least aggressive of the Fescues
- Allows other species to flourish around it
- Slow growing but extremely persistent
- Drought-resistant

Meadow Fescue

- Can be used in conjunction with Timothy to make Hay or graze.
- Persistent and drought tolerant
- Grows on all soil types
- Used as an alternative to Perennial Ryegrass as a less aggressive option

Chewings Fescue

- Chewings fescue is a subspecies of red fescue that shares similar characteristics
- Slow growing
- Smooth, carpet like appearance
- Used in high quality sports mixtures, Golf, Bowling Greens etc.

Tall Fescue

- Deeper roots enable it to survive in particularly dry areas
- Will grow extremely tall if left unattended
- Less palatable than other species (if used in an agricultural situation)
- Tolerant of heat, drought and shade

Common Bent

- A very fine texture and grows very dense
- An attractive, relatively short grass
- Widely used for fine lawns, putting and bowling greens
- Acts as a natural weed suppressor

Smooth Stalked Meadow Grass

- Slow to establish
- Very drought resistant
- Narrow bladed, creeping and binding grass
- Can be sown at any time of year when conditions are suitable

Rough Stalked Meadow Grass

- Used primarily in a wetland mixture
- Rapid germination and quick establishment over a wide range of soil temperatures
- Limited tolerance to very close mowing or trampling
- Shade tolerant

Micro Clover

- A supplement for your turfgrass or as an alternative for a traditional grass lawn
- Protects your lawn from diseases & pests
- Easy to grow even in poor soils
- Attract pollinators and bees

Wood Meadow Grass

- A delicate grass
- Extremely shade tolerant
- Suited to light, infrequent mowing
- A very “tussocky” grass

Brassicas

Forage Rape

- Very good winter hardiness and can be grazed as late as February
- Very palatable and digestible
- Ready to graze in just 12 weeks

Kale

- High yielding
- Extremely winter hardy
- Can be grazed from September through to March

Turnip

- Longer growth time than Stubble Turnip, needing 20 weeks.
- Can be grazed as late as March
- High yield potential

Stubble Turnip

- Popular, economical choice for winter feed
- Ready to graze in 10 – 12 weeks
- Highly palatable

Rape / Kale Hybrid

- Yield potential of Forage Rape
- Winter hardiness of Kale
- Works well alone or as part of a blend

Swede

- Suited best to wet, heavy ground
- Very winter hardy
- High dry matter

Oil Radish

- Produces high organic matter in short periods
- Suppresses weeds and deep roots benefit soil structure
- Ideal as a green manure crop

Mustard

The cheapest option in terms of cover crop cost. Germinates and establishes on a range of soil types, and is quite drought tolerant. Ideal fast cover where rabbits have caused damage.

All Other Straights

Quinoa

Sometimes slow to establish, and needs warm fertile compact seedbeds. Best sown not before late April/early May, particularly in the north of the country (excellent source of protein for birds).

Buckwheat

Can be sown as a straight or with other game cover species to provide both feed and cover for partridge and pheasant. Bushy in appearance and smothers out weeds. Matures within 14 weeks from late April/ May sowings. Produces nectar in abundance (a very attractive crop to deer).

White Millet

Best suited to the warmer parts, and milder climates of this country. It is a good choice too, to sow as a windbreak on more exposed sites. Can grow 80 to 90cm in height, so ideal for flushing areas as well as a feed source for large and small birds. Combines well with sunflower, sorghums and maize plus it matches them for herbicide usage.

Red Millet

Similar attributes, game usage and plant characteristics to White millet!! Difference being lower rate of seed production and is thinner leaved. (A less 'warmer' cover if sown on its own). Red and white millet mixed are excellent sources of protein for wild birds.

Sunflowers

Best used in game cover mixtures, on warmer sites of mid and southern U.K. Great for attracting birds, insects and small mammals, giving a vital and varied habitat within a game mix.

Phacelia

Attractive green manure or cover crop used across Northern Europe. Easy to establish, giving a dense habitat. Best sown April to early August.

Giant Sorghum

A cross of Sorghum with a Sudan grass hybrid from Australia. It is deep rooted and thus drought resistant and exhibits Atrazine tolerance (ideal for weed control). Produces dense vegetative cover perfect for flushing, and can grow to approx 2.5 to 3m tall. Conducive to high inputs of N fertiliser, but not a food source for birds. Combines well with sowing of kale, millet or sunflower Ideally sow early May to mid June.

Dwarf Sorghum

Like Giant Sorghum giving good dense cover from May/June sowings. Dwarf types are less likely to lodge and are best suited to free draining lighter soils or more exposed sites. Dwarf Sorghum can grow to 1.75 to 2m. It provides excellent cover during critical winter months, (loves N fertiliser).

Borage

Another non brassica option that flowers between June and October. An annual herb which will grow to a height of 60 to 80cm with bright blue flowers. Often used in companion planting to nurse Legumes and Brassicas. Borage suits well-drained soils. Ideal sowing time is April/May.

Gold of Pleasure

Grows from 40 to 80cm, with clusters of small yellow flowers. A fast maturing plant providing an excellent food source for wild birds. Its woody stem provides dense and sturdy shelter too. Best sown from early April through May. Needs soil temperature of 10°C.

Maize (for Game Cover)

Highly suited to game cover management because it gives both a food source via cob/grains, areas for easy bird movement in open ground between plants. It exhibits an almost natural habitat for large and small birds. Maize is an excellent product to combine with Millet/Sunflower/Sorghum etc. to provide warmer or denser ground cover, or a more varied habitat. Best sown April to late May.

Field / Ticbeans

Superb food source for pheasants. Performs well on heavy land from spring sowings. Useful to mix with Kale, Millet or Triticale.

Triticale

Can be mixed with Beans, Buckwheat, Millet or Sorghums. Survives well where rabbit infestation may be a problem, as it is quick and robust to establish.

Linseed

A good choice particularly in small bird mixtures. Provides a food source, hardiness and open cover (therefore good small bird access). Cheap and easy to establish from late March to late May sowings. Also a good alternative to some brassicas where Club Root or "Brassica" sickness (due to over frequency of sowing) has occurred.

Herbs

Ribwort Plantain

This perennial herb is low yielding but has deep roots and is grown for its high mineral content. Able to survive in nearly all soil types.

Yarrow

A deep-rooting perennial that performs well with other Herbs. Extremely drought resistant.

Burnet

The most palatable of the herb family & extremely drought resistant. Medicinal benefits in livestock.

Sheeps Parsley

Shorter duration than other herbs. Suits lighter soil types.

Chicory

Adaptable to a wide range of soil types. Chicory is becoming an increasingly popular non-brassica choice for game cover. It self-seeds and is highly persistent. Growing 40 to 100cm tall, it produces leaves in the first season. An attractive pale blue flower is then produced. Chicory benefits greatly from being in a mixture with N fixing legumes.

Testimonial

AB8 Mix



“As part of our large Countryside Stewardship Mid-Tier Scheme we have planted over 55Ha of new field margins and plots, using AB8 Floristically enhanced grass mix over the past few years.

They have performed brilliantly in all scenarios that we have planted them into.

Our farms are a mixture of very light Cotswold Brash, and very heavy Thames Valley clay. The AB8 mixture contains enough species variety that we gain good grass cover, while also providing and long a varied flowering window from the floristic elements of the mix on both soil types.

Throughout the summer they have provided a varied habitat and food source for a multitude of pollinating insects, which are vital to many of our niche crops that we grow. In conjunction with the summer show of flowers the grass elements have provided ample space for hibernating wildlife over the winter months.

They have been remarkably resilient through drought conditions, as well as surviving flood waters without losing their ability to perform aesthetically and from a biodiversity view point.”



Get in touch

Address:

Greenland Seeds Ltd
Unit 2, Technology Close
Newport
Brough
East Riding of Yorkshire
HU15 2FX

Contact:

Call **01430 449111**

Email info@greenlandseeds.co.uk

Visit www.greenlandseeds.co.uk

